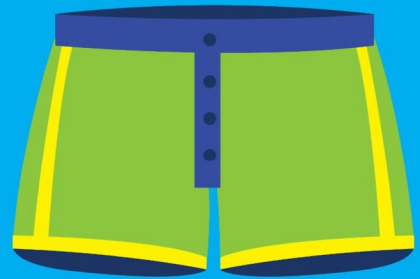
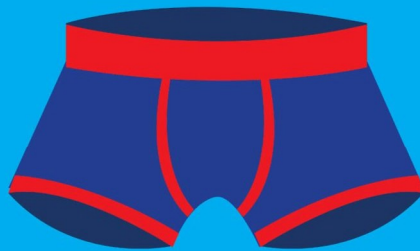


YOUR PASSWORDS ARE JUST LIKE YOUR UNDERPANTS



CHANGE THEM OFTEN!

KEEP THEM PRIVATE!

**NEVER SHARE THEM
WITH ANYONE!**

WHY SECURITY AWARENESS TRAINING?

**RANSOMWARE
PHISHING
CEO FRAUD
COMPLIANCE**

THAT'S WHY



SEE SOMETHING STRANGE OR UNUSUAL? **REPORT IT IMMEDIATELY!**

If you are worried about reporting a non-event, don't be!
Reporting anomalies does not mean you are reporting a non-event,
it just means you are reporting something **unusual**.
In the case of incident reporting, it is always better to be safe than sorry!

KEEP A CLEAN DESK!

DON'T LEAVE PASSWORDS OUT IN THE OPEN.
LOCK YOUR SCREEN BEFORE LEAVING YOUR DESK.
PUT AWAY **CONFIDENTIAL** DOCUMENTS.
MESSY DESKS ARE SECURITY RISKS.



Don't be phish bait.



Use common sense.



Stay focused.



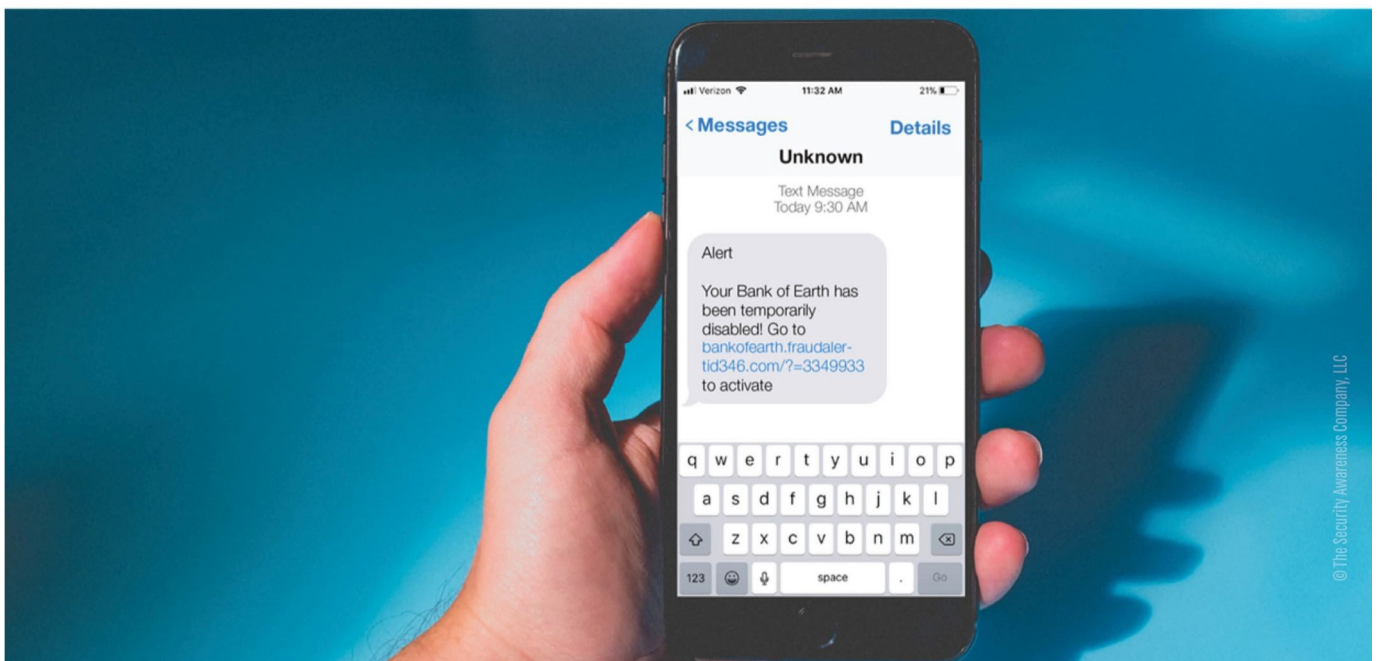
Slow down.



Think before you click.



If you **suspect** a phishing attack, report it immediately.



© The Security Awareness Company, LLC



**DON'T LET THESE COMMON
PHISHING PHRASES CATCH YOU
HOOK, LINE, AND SINKER!**

NEW MESSAGE FROM:

YOUR BANK

"FRAUD ALERT."

NEW MESSAGE FROM:

facebook

**"YOUR ACCOUNT WILL
BE DISABLED!"**

NEW MESSAGE FROM:

NETFLIX

**"PLEASE UPDATE
YOUR PAYMENT DETAILS"**

© The Security Awareness Company, LLC

SUBJECT LINE RED FLAGS

Dropbox validate (de) Docusign activate
confirm P.O. DHL password account update
urgent OneDrive quote document purchase order
Fedex cancel file UPS
authenticate IRS doc
Paypal invoice payment
terminate RFQ request
verify important



Think
Before You Click





El Pescador

a KnowBe4 company

**To click without
thinking is
like driving
blindfolded.**



**Always hover
the mouse
over the link
to find out where
it will take you.**

www.maliciouswebsite.com/malware/122930182928192891

Can you spot a social engineer?

It's not always easy.

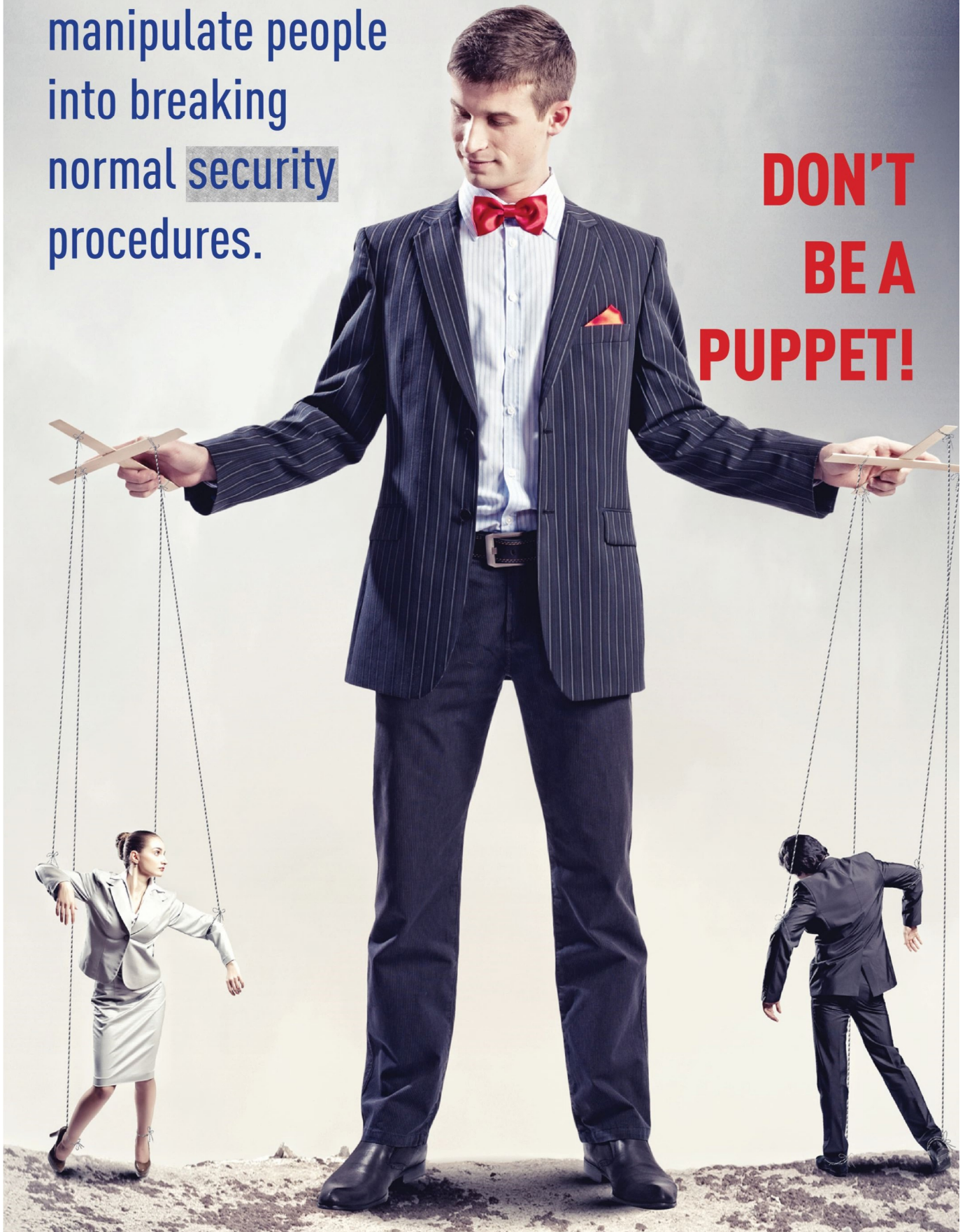
Trust but **verify** the
identity of whom you
are speaking to.



© 2017 The Security Awareness Company, LLC.

Social engineers
manipulate people
into breaking
normal security
procedures.

**DON'T
BE A
PUPPET!**



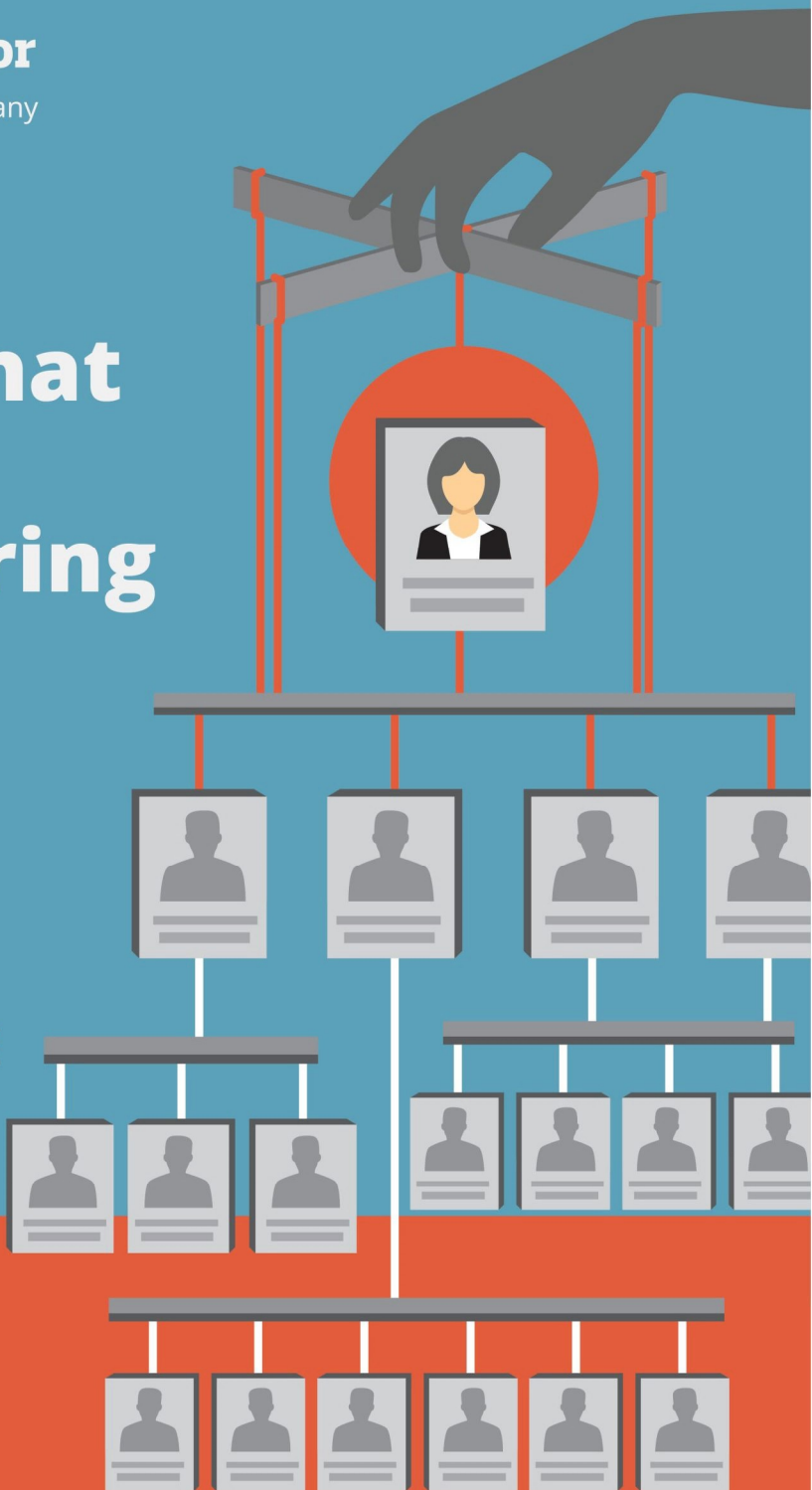


El Pescador

a KnowBe4 company

Do you know what social engineering is?

They are the practices used to gain access to important or sensitive information in organizations by deceiving or **exploiting** people's trust.



The attacker may assume another identity by pretending to be a professional from a certain area to deceive people - who, if untrained, can be easily manipulated.

Preserve your privacy.

Social networks are the primary sources
of data collection for phishing attacks.



If your personal information
is on the Internet, you may
be a victim of criminals.

Review your security and
privacy settings. Make as little
as possible available to those
who are not on your network.



El Pescador

a KnowBe4 company

SOCIAL MEDIA = SMOKE + MIRRORS

Social media is full of half truths and quite a few flat out untruths. That person posting pictures of their perfect life probably doesn't post about the messy parts of their life. That clothing ad with unbelievable prices that pops up in your newsfeed, you really should not believe. That cool person you met online might not really be who they say they are. Social media is a great way to connect but you must always remember that not everything is as it seems to be.

© The Security Awareness Company, LLC

CAPTAIN AWARENESS

LIKE PINEAPPLE ON PIZZA,
BE WARY OF UNEXPECTED
ATTACHMENTS.



DO YOU RECOGNIZE THE SIGNS OF A SPEAR PHISHING EMAIL?

To: UNDISCLOSED-RECIPIENTS
IS NEVER A GOOD SIGN.

From: Susan Molar <susanmolar@gmail.com>
Subject: UNITED NATIONS ORGANIZATION
Date: June 18, 2013 6:22:40 PM CDT
To: undisclosed-recipients;;
Reply-To: hansbruce@london.com

THE FROM AND REPLY-TO
ADDRESSES ARE DIFFERENT.

Dear EMAIL OWNER/Fund Beneficiary,

We been authorized by United Nation secretary general, and governing body of the UNITED NATIONS Monetary Unit, to investigate the unnecessary delay on you payment, recommended and approved in your favor during the course of our investigation, we discovered that your Payment been Delayed by corrupt officials of the Bank who are Trying to divert you funds into their private accounts.

If you like receive you're funds thru this means you advised contact with Following information:

1. Your Full Name:
2. Address Where You Want the Courier to Send ATM Card
3. AGE
4. Occupation:
5. Telephone Numbers:
6. COUNTRY:

REQUESTS FOR PERSONAL OR
SENSITIVE INFORMATION
ARE USUALLY SCAMS.

NOTE: You are advised to furnish Mr. Hans Bruce with your correct and valid details. Also be informed that the amount to be paid to you is £1,000,000,00GBP. We expect your urgent response to this email to enable us monitor this payment effectively thereby making contact with MR.HANS BRUCE as directed to avoid further delay.

Congratulations.

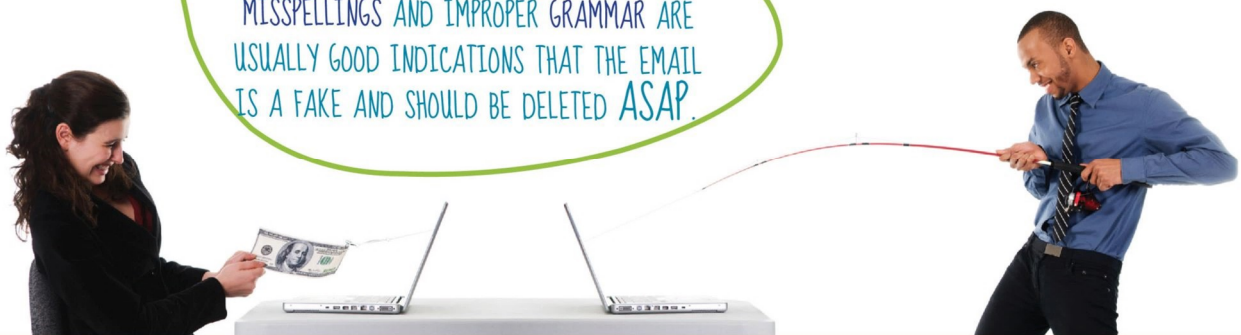
MR. KASSYM-JOMART TOKAYEV

DIRECTOR-GENERAL

UNITED NATIONS ORGANIZATION

PROMISES OF MONEY, THREATS OR
ALARMING MESSAGES, & DEALS
TOO-GOOD-TO-BE-TRUE ARE COMMON
PHISHING EMAIL TACTICS.

RANDOM CAPITALIZATION, ODD PUNCTUATION,
MISSPELLINGS AND IMPROPER GRAMMAR ARE
USUALLY GOOD INDICATIONS THAT THE EMAIL
IS A FAKE AND SHOULD BE DELETED ASAP.



DON'T BE PHISHING BAIT.